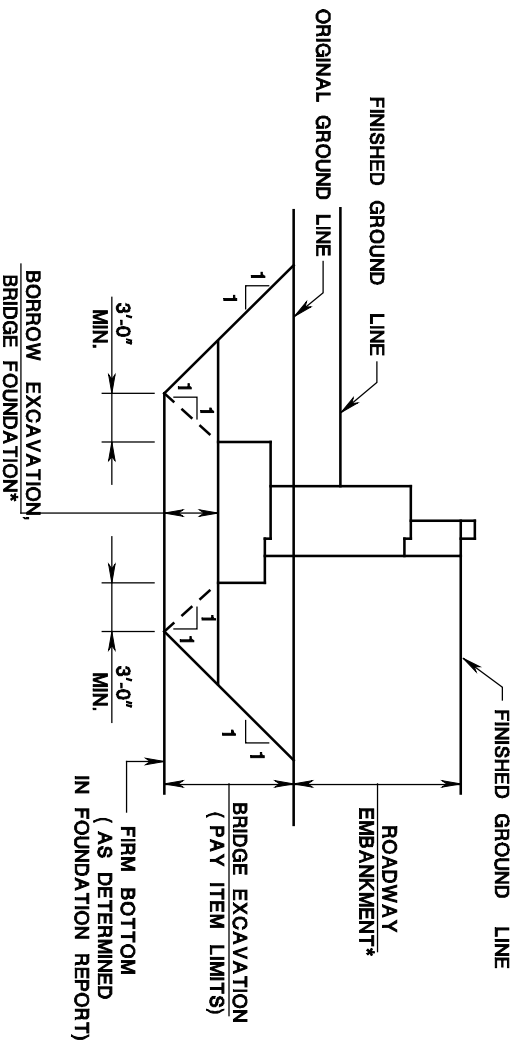


PAYMENT LIMITS FOR EXCAVATION (SHEET 2 OF 5)

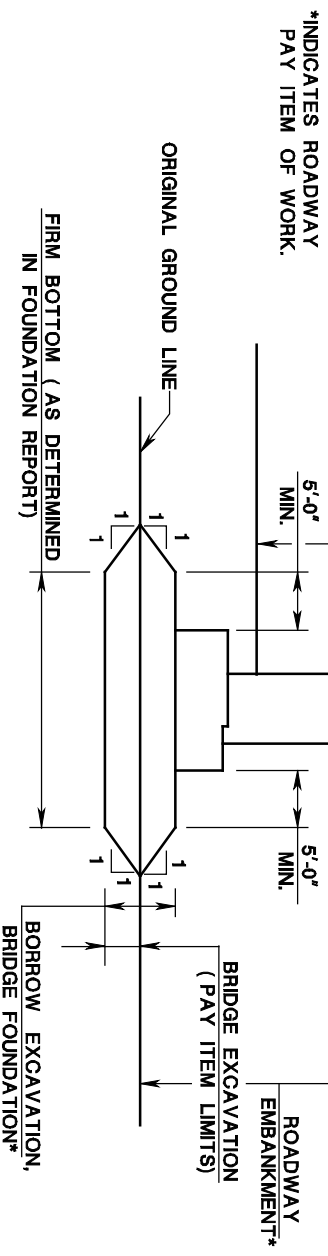
ISSUED: 2009

PLATE
3.15-2



CASE 3 (ORIGINAL GROUND LINE ABOVE FOOTING)

NOTE:
HIGH ABUTMENT ILLUSTRATED.
SIMILAR SKETCHES REQUIRED
FOR PIERS, WALLS AND OVERHEAD
SIGN STRUCTURES.



CASE 4 (ORIGINAL GROUND LINE BELOW FOOTING)

NOTES:

1. SEE GUIDE SHEET PLATE 3.15-1 NOTE 1.
2. SEE GUIDE SHEET PLATE 3.15-1 NOTE 2.
3. BRIDGE EXCAVATION IS CONSIDERED FOR SCHEDULING AS A PAY ITEM, WHERE UNSUITABLE MATERIAL IS NOT BEING REMOVED UNDER ROADWAY EXCAVATION ITEMS OF WORK, DEPTH OF EXCAVATION TO REACH SUITABLE MATERIAL IS MINIMAL, AND PILE FOUNDATIONS ARE NOT REQUIRED-AS DETERMINED IN FOUNDATION REPORT.
4. ALSO, SEE GUIDE SHEET PLATE 3.3-2.